

User guide



MIXVIBES®
Home Edition

Version 6.35

Thank you for choosing MIXVIBES® HOME EDITION. For all your questions and assistance requests please refer to the MIXVIBES® forum : www.mixvibes.com/forum.

This is a comprehensive guide that goes over the functionalities of MIXVIBES®. Take the time to read this guide to take full advantage of the potential of MIXVIBES® HOME EDITION.

Minimum configuration to operate MIXVIBES® HOME EDITION :

- Operating System : Windows® NT, 2000, XP ou Vista
- Intel® Pentium III 1GHz Processor or equivalent
- 512 MO RAM
- DirectX ou ASIO compatible sound interface
- CD-ROM player
- 15MO free Hard Drive space

MIXVIBES® HOME EDITION



1 - INSTALLATION

Software.....	7
USB interface.....	8

2 - THE PLAYER

The layer in details.....	11
Using a player	13
Advanced features	14
Equalizer and Mixer	19

3 - MIXING

Your first mix	21
Mixer Rack	23

4 - MEDIA

The Mediabase.....	21
Playlist management.....	27
Browsing the media.....	29
Selection Window.....	30

5 - THE DISPLAY

Interface display	34
Size of the components.....	34
Mediabase display	35

6 - THE MENUS

The Main Menu	36
Options	38

7 - THE TOOL BAR

The tools.....	44
----------------	----

8 - INDEX.....46

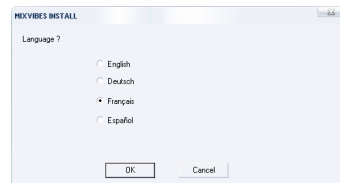
Chapter 1: The Installation

A. Installation of the software

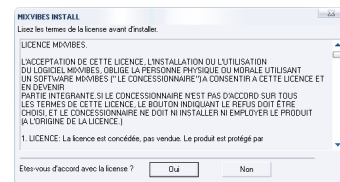
1. Installation

Insert the MIXVIBES® HOME EDITION CD in your computer's CD player. If the installation does not start automatically double click on the « install.exe » file in the root of your CD-ROM.

Choose the installation language and click **OK**.



Please read and validate the user agreement by clicking **Yes**.



Enter your name, company, e-mail address and activation code and click **Next**. You will find the activation code in your MIXVIBES® HOME box



Choose an installation location or accept the default directory location: « C:\Program Files\MixVibesPro6 ». Click **Next**. The required space about 15Mo.



Click **Finish** to finish the installation process.



Congratulations, your MIXVIBES® HOME EDITION is now installed and ready for use.

B. Installation of the USB sound interface

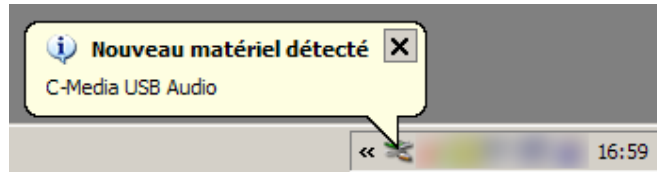
First, make sure you are in possession of the MixVibes USB sound interface and that you have an available USB port on your computer.



This sound card adds an extra output to your system allowing you to monitor your mix with headphones.

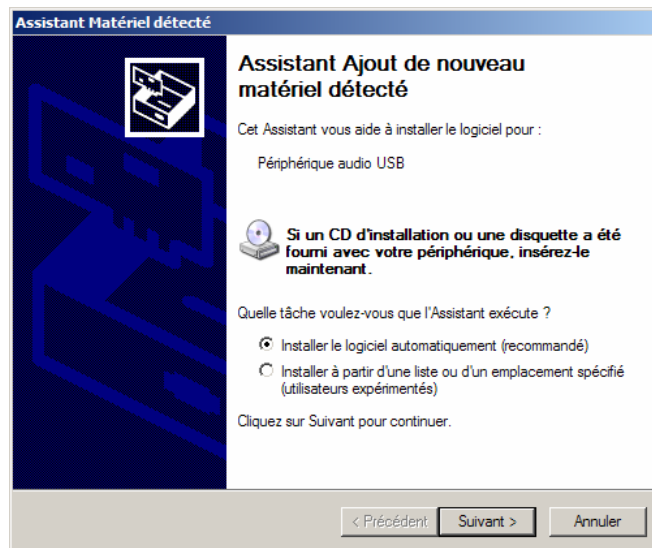
Plug your MIXVIBES® USB sound interface into an active USB port :

2.



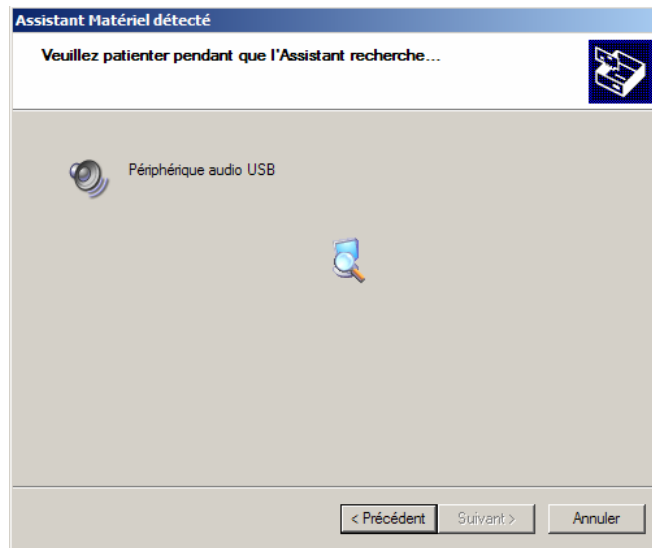
Windows® automatically detects the unit.

3.



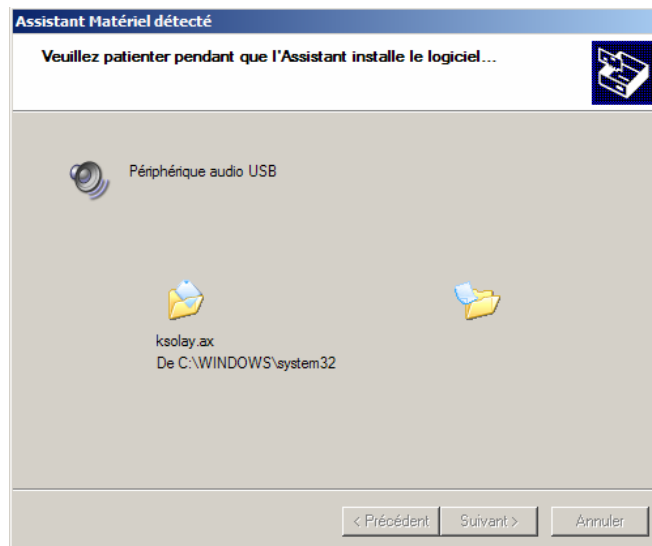
Choose the Windows® automatic and hit **Next**.

4.



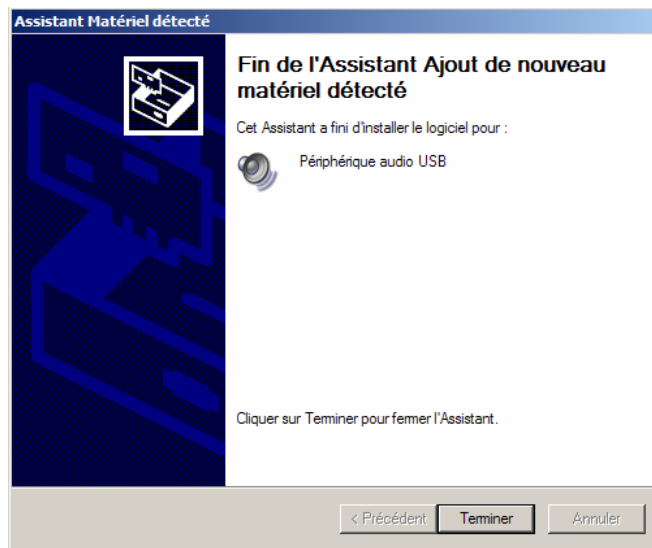
Windows® searches for the relevant drivers...

5.



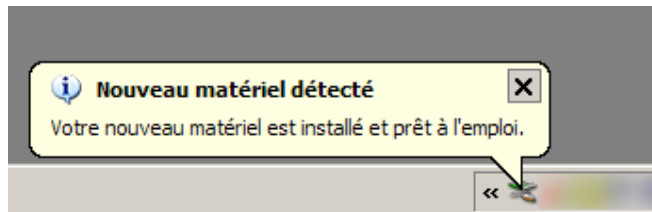
...and installs the necessary files.

6.



The USB sound interface is now installed. Click **Finish** to exit the installer.

7.

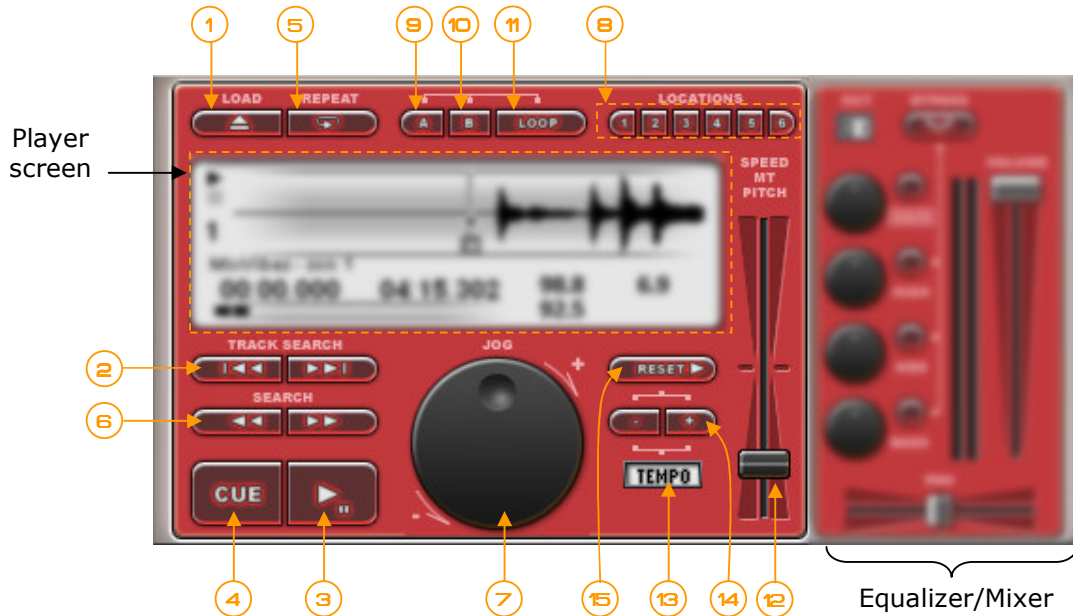


Windows® confirms the installation of your peripheral; you can now use the MIXVIBES® USB sound interface (see p.39 for mix monitoring).

Chapter 2 : The MIXVIBES® player

A. The MIXVIBES® player in detail

❖ the MIXVIBES® player:



Choose a file

1. Load a file : let's you browse through your HD to load media
2. Previous/next media : loads the previous/next file displayed in the mediabase.

Play the file

3. Play/pause : allows to launch the playback or pause the playback of a media file.
4. Cue/Stop : allows to define a cue point and stop the playback of a media file (stop with return to the defined cue point).
5. Loop : activate/deactivate loop playback of a file.
6. Playback direction: Defines the playback direction (forward or backward).

Position in the media file

7. Fast Forward/Rewind.
8. Jog wheel.

Manage the location points

9. Location points 1 to 6: set and store up to 6 location points on a media file.

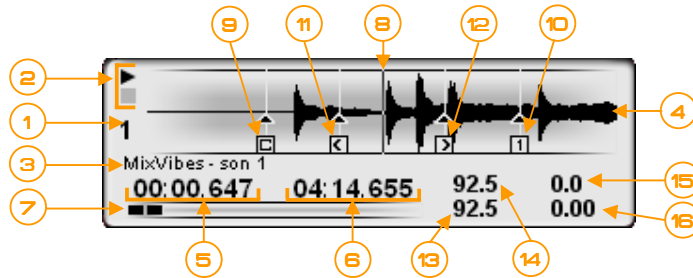
Manage the loops

10. Loop entry point : Define the entry location of a loop.
11. Loop end point : Define the end location of a loop.
12. Loop On/Off : Activate/Deactivate the loop playback .

Speed, Master Tempo or Ton Mode

13. Speed / Tempo / Ton cursor : modify the speed, tempo or ton of your media file.
14. Cursor Mode : Choose between speed, tempo or ton modification.
15. Cursor Nudge : Diminish or Boost the parameter (speed, tempo or ton) associated to the cursor (right click) or pitch bend¹ the playback of your media file (left click).
16. Cursor Reset : Reset the cursor parameters


❖ MIXVIBES® Player screen:

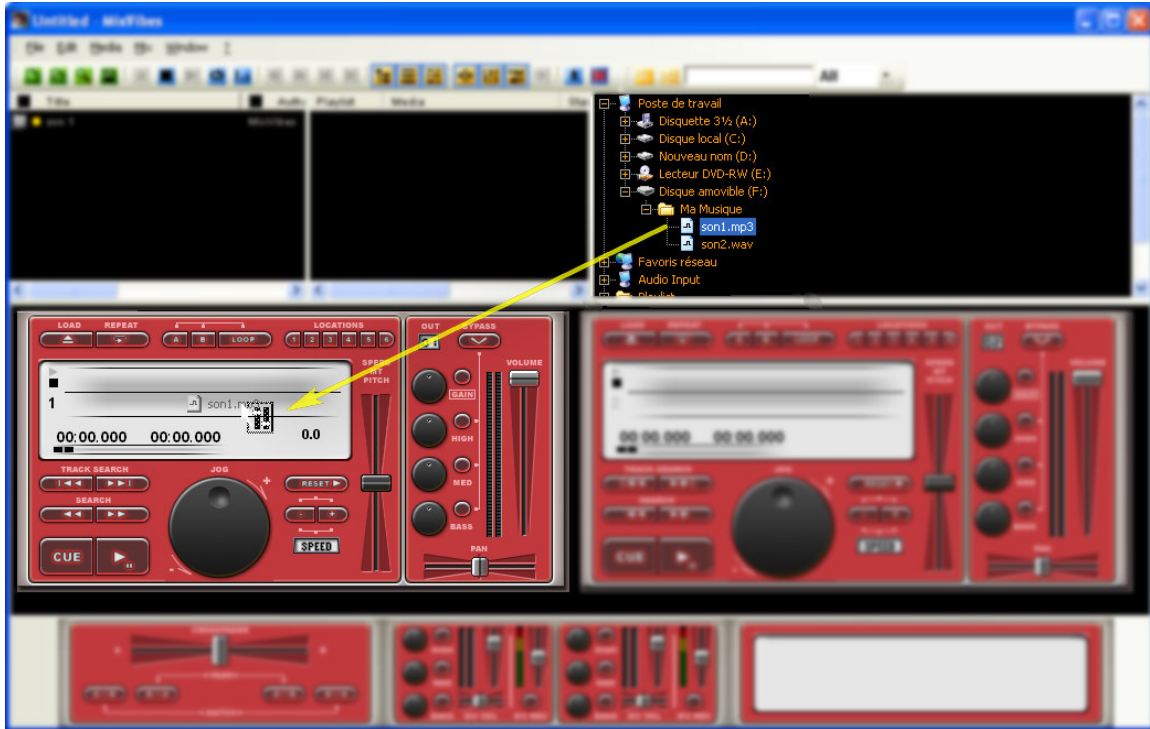


1. Player number : bright (1) if active, dim (1) if not.
2. Player status : in use ▶ ↶ ▶ / stopped ■ ↶ ■.
3. Media Name display : « author - title » if tagged correctly.
4. Wave form : Visualize the media wave form.
5. Time elapsed (since the beginning of the track).
6. Time remaining (before the end of the track).
7. Search Bar : Visualize the plaback point and go to a playback location by clicking on the wave form.
8. Courant playback position.
9. Cue point.
10. Quick Location point n° 1 (6 available).
11. Loop entry location.
12. Loop exit location.
13. Initial tempo
14. Playback tempo
15. Cursor value (speed / tempo / ton)
16. Pitch Bend value

B. Using a MIXVIBES® player

1. Load a Media


Drag and drop your media file from the mediabase onto the desired player (e.g. an MP3 file). The icon  indicates that you can load the file. The file is added to the mediabase if it was not yet in it.






In default mode, MixVibes analyzes the file's peak volume and average tempo (BPM). MIXVIBES® also automatically defines a cue point at the beginning of the media (see p.15). These presets can be redefined or deactivated in the **Options** menu **File > Options > Mix**). Once loaded, the media file is ready for playback.

2. Media Playback


The MIXVIBES® players offer the same playback possibilities as any standard multimedia player.


Click on play/pause  to launch the media file playback from your defined cue point automatically defined by MIXVIBES®.

Click on repeat  →  to activate loop playback mode

Click on Play/Pause again  to pause the playback. Hit Cue to go back to your defined Cue point  (the beginning if not set otherwise), hit  to go back to the beginning.

- Fast search buttons :

 : fast forward,

 : rewind.

On click moves your playback location by 4 beats (if MixVibes has analyzed the media file tempo) or by 2 seconds otherwise.

- the jog wheel enables you to scroll through the media with great precision, to the millisecond. Go forward by rotating clockwise, backwards by rotating counter clockwise.

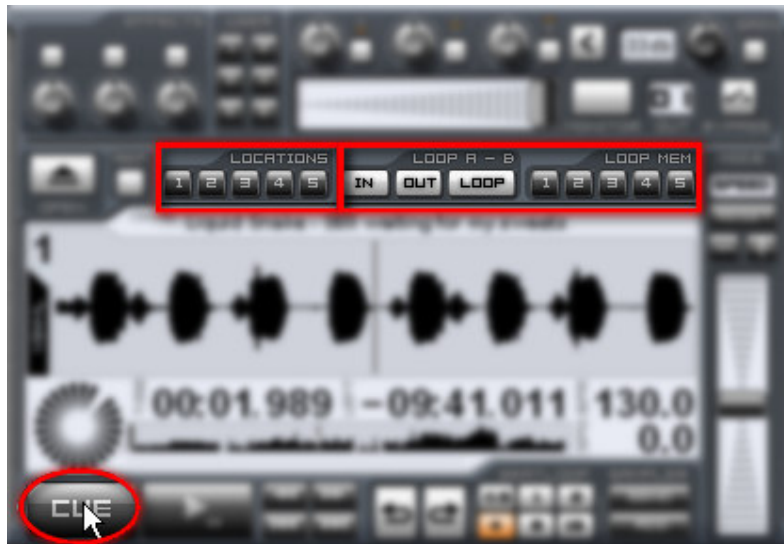


C. Player advanced features

The previous functionalities are the basics you can expect from a DJ media player, in this part we will go over the more advanced features that will give you the possibility to really differentiate your mixes.


Let's go over a few features commonly used by DJs to improve there mixes.

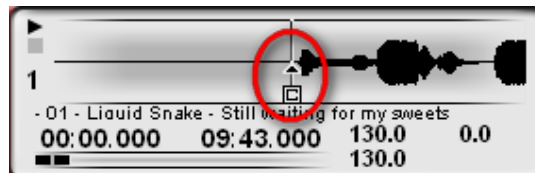
3. cue, locators and loops




❖ cue

This feature allows you to enable the playback instantaneously at a predefined location in the media file (the cue point).

Load a media file the cue point is automatically set at the beginning of the track and is designated by this icon . You can modify the default cue point location parameters in the menu (**File > Options > Mix**).

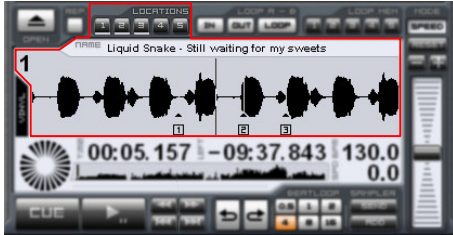


- To modify the Cue point, right click  at the precise location you wish to store.



- During playback, a left click on **CUE** will bring you straight back to the cue point.
- When the media is paused a left click on **CUE** will bring you back to the cue point, keep the left click down to launch playback. Release the left click to go back to the cue point.

❖ The locators



This feature allows you to store up to 6 locators on a media file. The number of locators can vary depending on the skin you use (see p.39).

The locators work basically like multiple cue points.

Set the locator number **1** by right clicking on **1** at the desired position **1**. You can also set the locator point during playback.

Left click on **1** to return to the locator point without modifying the playback status. You can thus store up to six locators per media file in your mediabase (see p.25)

❖ Create a Loop



Load a media file in the player. Make sure the tempo (BPM) has been correctly detected. Choose an entry location to begin the loop then click on **IN**. The entry point is designated by **1** under the wave form.

Define the loop exit location, by clicking on **OUT** at the desired location. The exit point will be designated by the **2** icon under the wave form.

Once the entry and exit locations have been set the (**LOOP** → **LOOP**) icon will activate itself. Launch the playback to appreciate the loop you just created.

To activate/dactivate the loop playback, simply click **LOOP**. A right click on **LOOP** sets the playback to the entry point without modifying the playback or loop status.

4. Speed, Master Tempo and Ton

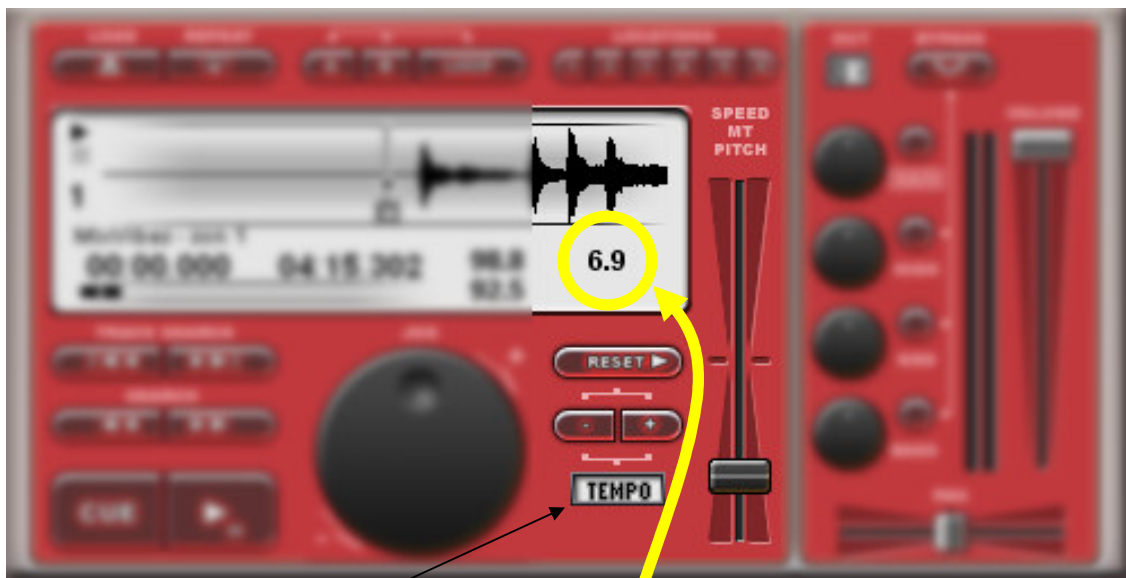
MIXVIBES® allows you to control the speed, master tempo or ton of your media files during playback. Each player is equipped with a control cursor to modify these parameters. In default mode, the cursor is inversed like on DJ turntables. If you move the cursor upwards the value diminishes and the other way around. You can modify this set up in the MIXVIBES® options.

A dedicated button allows you to choose which parameter the cursor controls :

- **SPEED** this mode is identical to the turntable mode. It modifies the pitch of a track without preserving the ton. (e.g. If you accelerate the tempo the track will be played at a higher tone)
- **TEMPO** This mode is usually known as Master Tempo. It allows you to modify the tempo of the media file without changing the tone.
- **PITCH** This mode allows you to modify the tone of the track without changing the tempo.

In all three cases the central position represents the value 0 (no modification). You can return instantaneously to this original value by clicking on **RESET ▶**.

The **◀ ▶** buttons allow you to do precise adjustments on the value of the modification la **value of the modification**

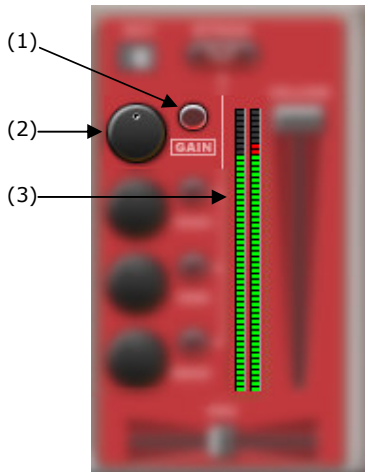


Notice in this example that the + **6.9%** pitch modification is enabled by lowering the cursor like on a standard DJ turntable.

D. Equalizer and Mixer

The upper right corner contains settings to equalize the audio signal before it is sent out of the player. These operations are currently handled by the Dj mixer or studio console.

5. Gain and mute



- (1) : mute switch
- (2) : Gain Level
- (3) : Gain Level
Visualization

The mix's fluidity is always improved when the volume of the two media files you are mixing is identical.

Unfortunately all digital files are not encoded at the same volume.

To improve your mixing experience MixVibes automatically adjusts the gain value of your tracks so they match as soon as the media is loaded.

👉 Beware of tracks that start with at a low volume. The gain adjustment should be done with peak gain level of your music file!

Click on mute to mute the track. Click again to unmute ».

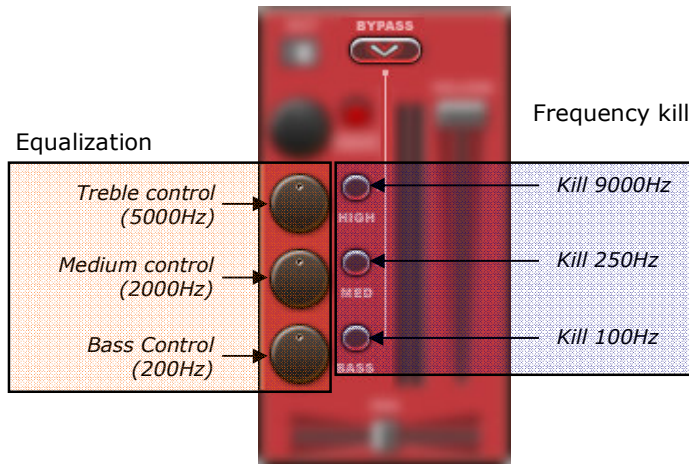
Keep the right click button down on mute to mute. Let go of the right click to unmute.


A double click on the potentiometer sets it back to the central position.

6. Equalization and Frequency Cuts

You can also modify frequency bands using the equalizer interface.

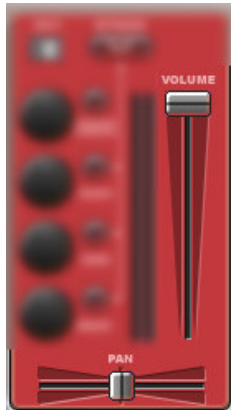
A 3-band equalizer and 3 frequency kill buttons are available to modify the equalization of your media file. A double click on the frequency potentiometers will set them back to their original value



A left click on bypass  activates/dactivates the equalizer and frequency kill settings. A maintained right click will activate/deactivate the settings until you release the click.

You can modify the equalizer features in the menu (**File > Options**).

7. Volume and Pan



In the upper right corner you will also find a classic volume cursor.

👉 Once the gain has been correctly matched DJs usually prefer to adjust the volume with the crossfader (see p. **Erreur ! Signet non défini.**), without touching the volume in the equalizer/mixer section.

8. Output assignment

MIXVIBES® offers the possibility to assign each audio output to a different audio device. The assigned peripheral is indicated in the equalizer/mixer section. Just click on it to change the player output. The assignment of peripherals is controlled in the menu **File > Options > Sound**.



You can also assign a specific player for monitoring. You can set up this preference in the same menu (**File > Options > Sound**).

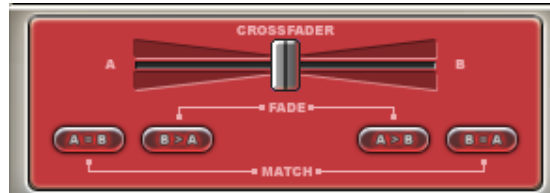
Chapter 3 : The Mix

E. Your first Mix with MIXVIBES®

9. What you need

To mix to media files two MIXVIBES® components are compulsory :

❖ the crossfader 🎧





This component has the identical function of a traditional crossfader on an analog DJ mixer. It is used to balance the mix of the 2 media files :



- In the central position, the mix is balanced. 50% of player 1 output and 50% of player B output ;
- Completely to the left side (A), only player 1 is heard
- Completely to the right side (B) ; only player 2 is heard.
- Between the left side (A) and the central position, the mix contains more of player 1 than player 2 ;
- Between the right side (B) and the central position, the mix contains more of player 2 than player 1.

If you are using a DJ mixer connected to a multiple output audio interface, you will not need to use the MIXVIBES® crossfader. You can use your mixer's crossfader for direct control.


Four extra buttons are available to complete the traditional crossfader features :



- Two fade that automatically launch the fading between two players:
 - o from 100% of player 2 to 100% of player 1  (left button),
 - o from 100% of player 1 to 100% of player 2  (right button).

👉 The autofade works directly on the volume of the players and not on the crossfader

- two auto tempo match buttons :
 - o  synchronizes player 1 with player 2's tempo (left button)
 - o  synchronizes player 2 with player 1's tempo (right button)

This tool gives access in one click to two of the Djs usual tasks. It combines beat matching and synchronization of 2 media files.

 If the option **Auto-Mix** is not active, only the first task is completed.

 The Auto-BPM rack 



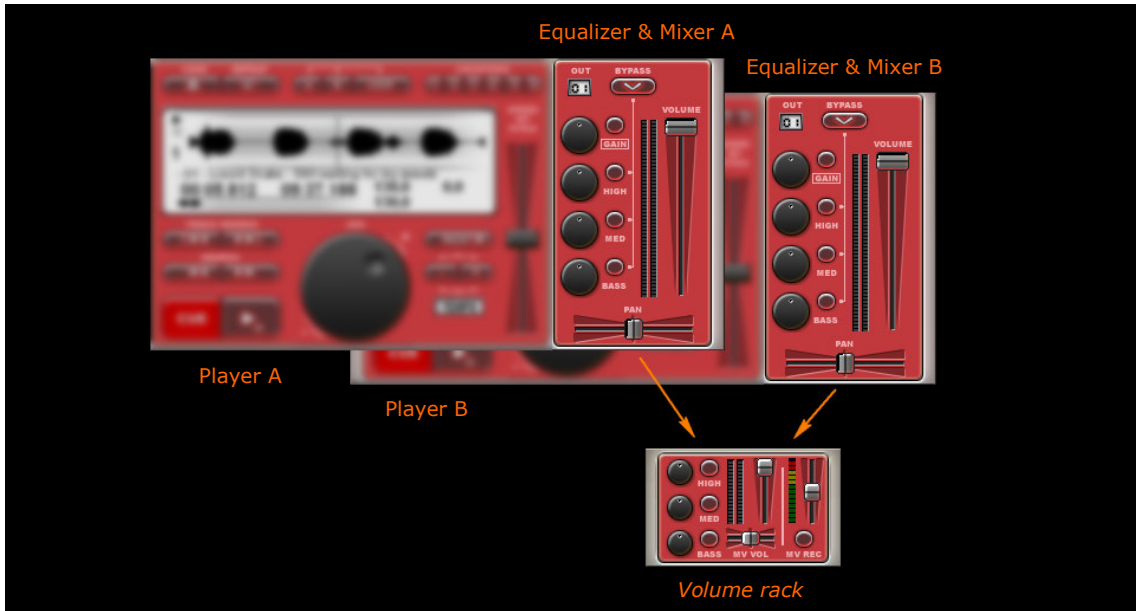
This tool enables you to control visually that the media files are in sync. Indeed the peaks represent a sound increase and usually correspond to the beat of a track. When two media files are in sync, the peaks are simultaneous.

The player 1 peaks are displayed in the lower part in black, while the player 2 beats are displayed in grey above.

In this precise example, we can notice that the media files are not quite in sync.

If you can not visualize the crossfader and auto-BPM rack on the interface click on there activation icons to make them appear.

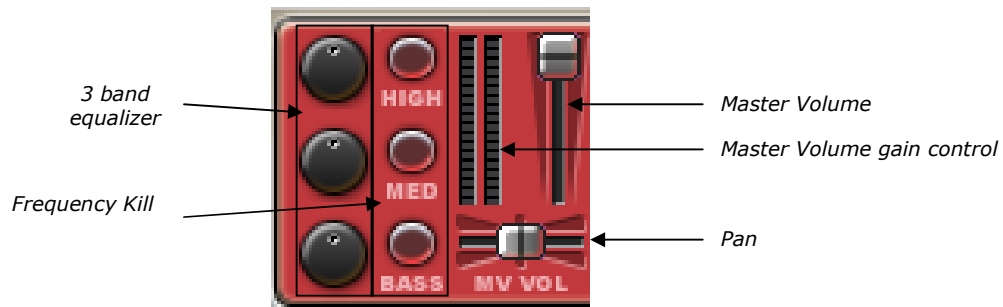
Volume Rack: Masterisation and Recording



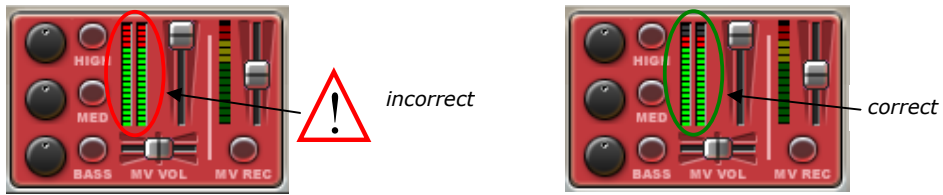
Depending on whether you are using one or two audio interfaces, you will have one or two volume racks available. If both your players are set to output 01 in the equalizer/mixer section of your players, your mix output will be controlled by the first volume rack.

10. Mastering

The volume rack is tool used to master your audio signal. It contains the same settings found in the equalizer/mixer section of your media player but concerns the master output.



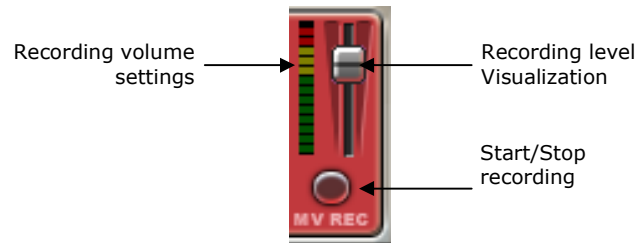
👉 To avoid saturation, check the audio signal visualization. If the signal is saturated you must change your settings in the Master volume section or Equalizer/mixer section (see p.19).



11. Recording

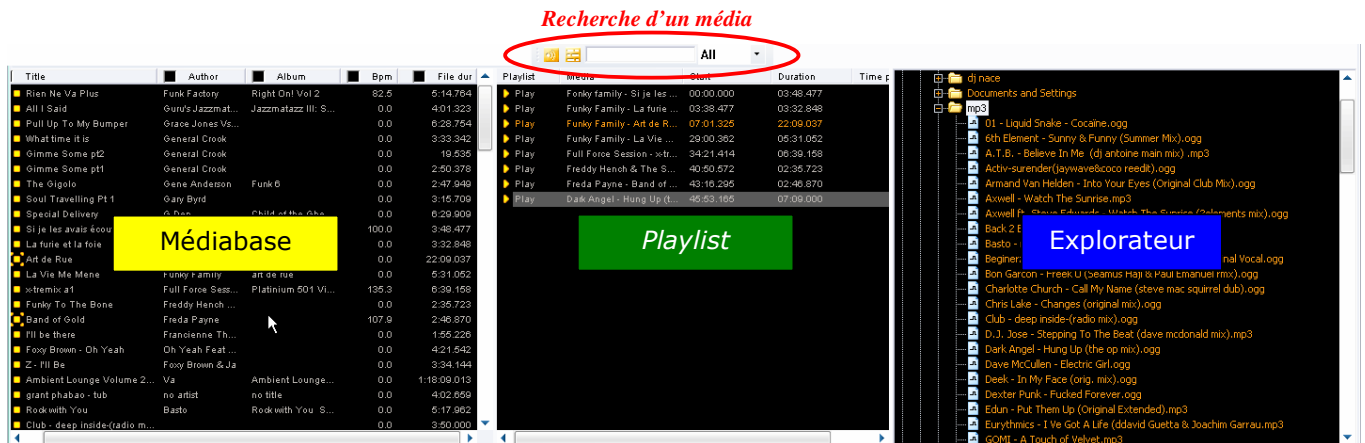
You can also record your mix in « .wav » format. Just click the c button in the volume rack of your choice and designated the name and directory for the recorded. The recording is active at once ! Click on record again to stop the recording

👉 Keep an eye on the Record output visualization to make sure the recording does not saturate !



Chapter 4 : The media in MIXVIBES®

To avoid losing time browsing for media files, MIXVIBES® proposes a selection of advanced media management features. To improve your efficiency and organize your playlists efficiently, you must create one or many « mediabases » (media libraries). This will allow you to access media very easily without browsing with your explorer through your hard drive.



A. The Mediabase

The media base is basically a selection of shortcuts towards your media files, thus making your tracks more easily accessible.

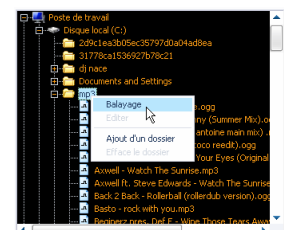
12. Add a file to the mediabase

Simply, drag and drop your media files from the browser to the media base.



The media file information is automatically loaded into the media base.

You can also add a complete directory to the mediabase. To do so, right click on the desired folder in the Browser. Then choose « scan dir » to add all the files to the mediabase.

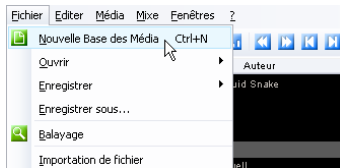


👍 If you load a media file straight from the browser to a MixVibes Player it will automatically be entered into your mediabase.


13. Manage the Mediabase

As previously mentioned, you can manage multiple mediabases.

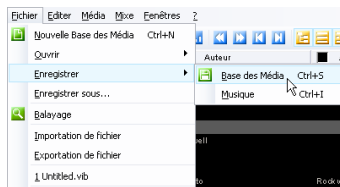
🔗 Create :



To create a new empty Mediabase you can either :

- Click on **Create New Mediabase** in the **File** menu.
- Click on  in the toolbar.

🔗 Save :



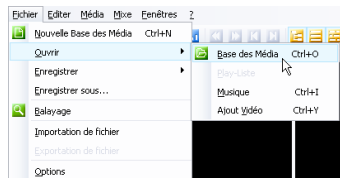
Once you have finished organizing your Mediabase, save it !

To do so you can either ::

- Click on **Save > Mediabase** in the **File** menu,
- Click on  in the toolbar.

If you have never saved your mediabase a dialog box will pop-up upon shut down, chose a name and directory to store your mediabase in « .vib » format. Click **Save** to validate. This file will store not only your mediabase but also, your players status and your media's cue points, locators and loops.

🔗 Load :



To load an existing mediabase :

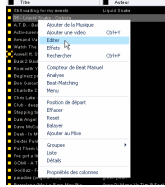
- Click on **Open > Mediabase** in the **File** menu..
- Click on  in the toolbar.

A dialog box is then prompted, select the desired « .vib » file and click on **Open**.

🔗 Sort:

To find your media more easily you can sort your media following different parameters called Tags. Click on the desired tag in the media base, for example Album, to class the media alphabetically per album, click again to reverse the sorting from increasing to decreasing classification.

❖ Modify media tag :



A right click on a mediafile gives you a range of choices. Chose **Edit** to access and modify the tag properties of the file (track name, artist name, album name, etc).

14. Import your iTunes library®

If you use Apple's iTunes® to sort your media files you can load your library straight into MIXVIBES® .

Click on **Import File** in the **File** menu. A dialog box is prompted asking to locate the iTunes® library « .xml » file (the default location is « My Documents\My music\iTunes\iTunes Music Library.xml ») select the file and click on **Open**.

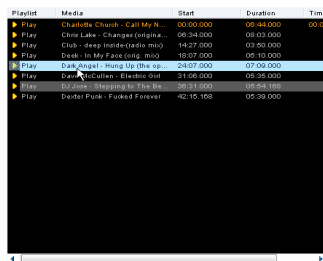
All the referenced media is then loaded into the mediabase as well. The iTunes® playlists appear as groups (see p.34) in the selection window.



This just an import function, the modification to the tags in done in MixVibes will not be recognized by iTunes®.

B. Playlists

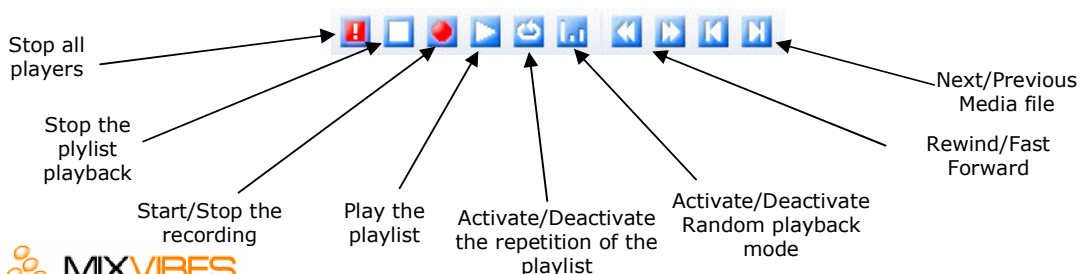
A playlist is a list of media files that will be played successively during a mix or DJ set.



A playlist can be created by drag and dropping media files from the mediabase or straight from the browser into the playlist window. (the files that are selected from the browser will be automatically added to the medalist).

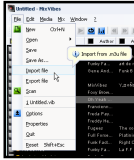
If you wish to modify the position in the mix or DJ set of a track just drag and drop it to the desired location in the playlist.

Once you have finished building your playlist, use these buttons to control the playback:



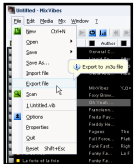
The MIXVIBES® playlists are compatible with most of the mp3 player software on the market. They are importable and exportable in « .m3u » and « .txt » format, and also exportable in « .lst » format.

15. Import a playlist :



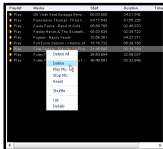
To import an existing playlist, click on **File import** in the **File** menu. A dialog box is then prompted, indicate the location of the « .m3u » or « .txt » playlist you wish to import, and hit **Open**.

16. Save a playlist :



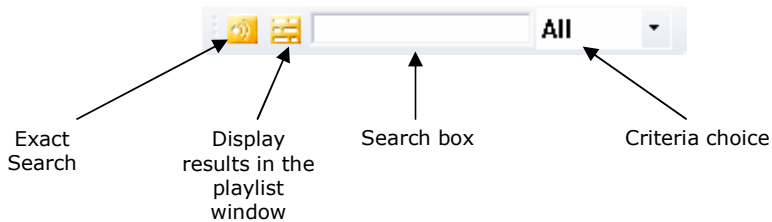
To export your playlist, click on **Export File** in the **File** menu. Chose an format and destination directory for your playlist file, the click on **Save**.

17. Modify a playlist :





A right click on a media file of the playlist will prompt a contextual option menu. Click on **Erase** to remove the unwanted media file. The media remains in the mediabase however.


C. Media Search



Once you have created a large mediabase in MIXVIBES® the fastest way to access media is through the Media Search box..

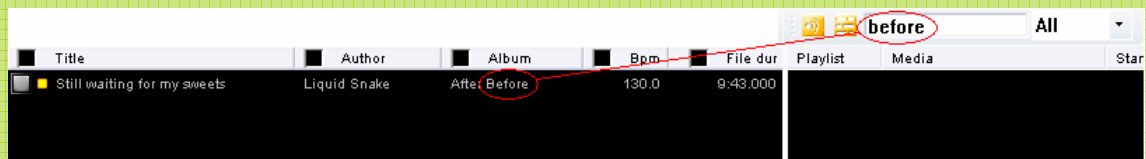
: Exact Search. Click on this button to Activate/deactivate the option. Once active, only the media that matches precisely the typed information will be prompted

: Playlist display. Click on this button to Activate/deactivate the option. Once active, the search results will be displayed in the Playlist window and not the Mediabase.


 This criteria list orients the MIXVIBES® search tool towards a unique tag parameter (Title, Author, etc.). In default position, the criteria is neutral (All). The search is directed towards all the tag parameters.

Usage Example :

Your looking for a track and you only know it's album name?



Type the keywords in the search box. MIXVIBES® filters the tag information and comes up with the related media files in a few seconds.

 To access the full mediabase, don't forget to empty the search box when you have found the desired track!

D. Selection Window

1. Advanced selection Window

Click on **Window>Selection** to prompt the advanced selection window.

The advanced selection window gives you a range of filters you can use to access your media files. It allows you to select a criteria and reduce the media base to the media files that respect the selected criteria (tag).



Remember to click **All** to deactivate the filter and access your full media base again!

For example the **Author** filter lets you sort your mediabase by author. Click on the cross **+** next to **Author** to access the list of authors present in your MIXVIBES® mediabase. Click on the desired author to reduce your mediabase to the relevant media.




The **Album, Genre, Rating, Remix, Year, Directory** filters are presented the same way as **Author**.

Some filters work differently.

For example the **Title** filter only refers to the first letter or number of a Media file's Title. Click on **A** to prompt all the media files with a title that starts by the letter "A..." The **File** filter works in the same way only it refers to the file name on your hard drive.

The **Bpm** filter selects media files in a predefined media interval. For example **61-80** let's ou access all the media with an analyzed BPM between 61 and 80 BPM.

 Make sure you analyze your mediabase first to access the BPM information of your media files

The **Duration** filter classifies the media by playback length. Click on **3 mn** to access all tracks 3 minutes (included) to 4 minutes long (not included).

2. The Groups

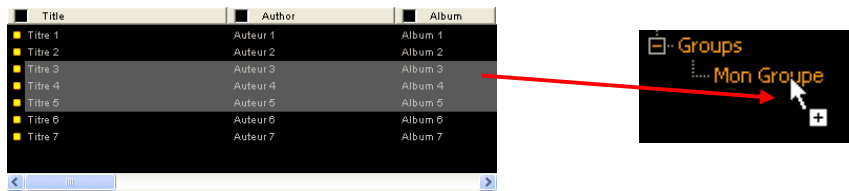
MIXVIBES® lets you create your own groups with your personal selections. These groups are available through the advanced selection window. They don't apply a predefined filter. Instead they let you access a user defined list of media files.

Create a Group

Right click on **Groups** in the advanced selection window and choose **Add group**. Choose a name for your group and hit **Enter**.



To fill up your media list, hit **All** in the advanced selection window. Then drag and drop the desired media in your new Group.



You can also add a multiple selection of tracks in your media base by right clicking on the selected tracks and choosing **Group>Add Selected Items in group**.

Choose the name of the desired destination group and click on it!

Modify a group

To delete a media file from a Group, right click on the file and choose **Group>Delete Selected Items in group**.



If you choose to **Edit>Delete** the media file it will be deleted from the mediabase.

Rename a Group

Simply right click on the desired Group and choose **Edit name**. Type in the new name and validate with **Enter**.

Delete a Group

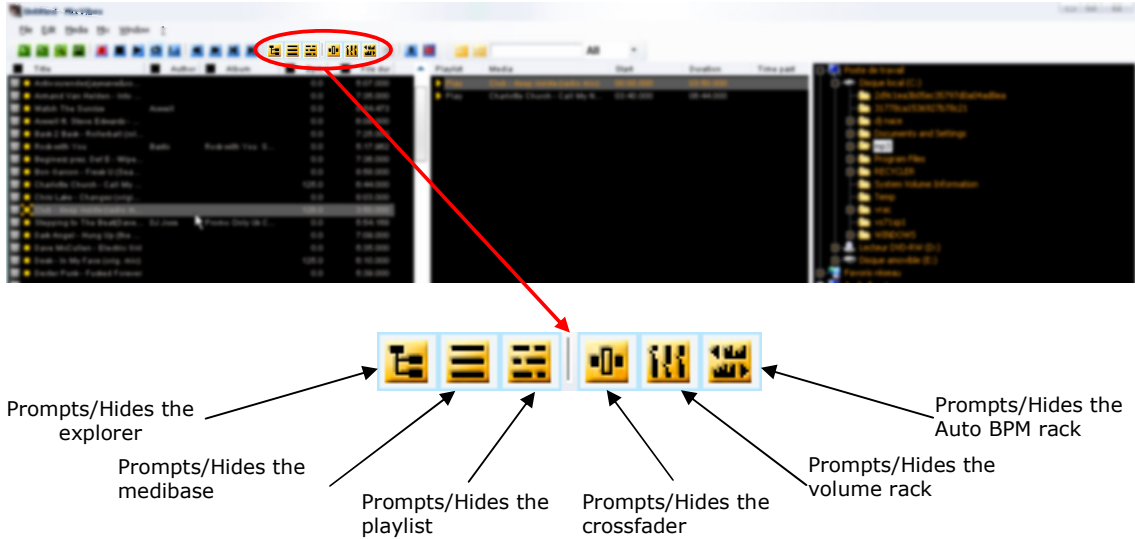
If you wish to delete a Group, right click on the Group and choose **Delete group**.

Chapter 5 : Personalize your Workspace


MIXVIBES® lets you organize your interface according to what you need for your mix. These preferences are automatically stored upon shutdown of the software.

A. Viewing/Hiding the devices in MIXVIBES®

Use the toolbar or the **Window** menu to choose which devices to view/hide :



Example :

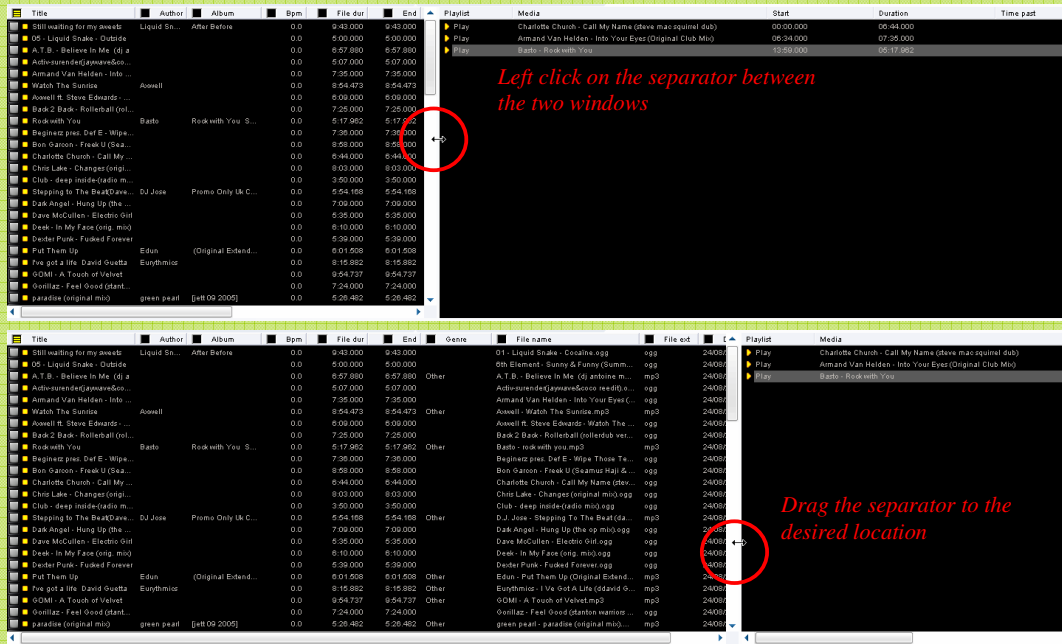
Once you have completed your mediabase, click on  to hide the explorer and free space on your interface.

B. Device size in MIXVIBES®

You can change the size of some devices on the MixVibes interface.

Practical Example:

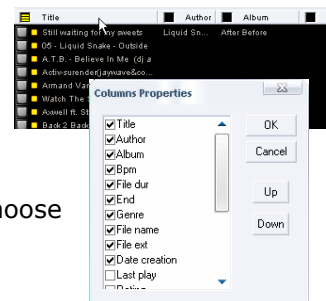
You wish to see more of the tag information in your mediabase and less in the playlist :



C. Viewing the mediabase information :

You can edit and classify the tag information in your mediabase (Title, Author, Album, etc.):

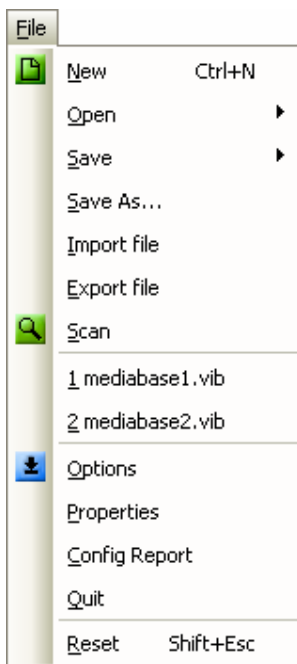
- Right click on the tag bar at the top of the mediabase,
- Select the desired tags and hit **Up** and **Down** to choose the display order then validate with **OK**.



Chapter 6 : Menu Presentation

A. Main Menu

1. File Menu



New : Create a new mediabase.

Open > Mediabase : Load a new Mediabase.

Open > Sequence : Load a Sequence (« .vsq »).

Open > Music : loads a new media file in the mediabase.

Save > Mediabase : Save your mediabase.

Save > Sequence : Save a Sequence (« .vsq »).

Save As... : Save a mediabase under a new name.

Import file : import a playlist « .m3u », « .txt » or your iTunes® playlist « .xml ».

Export file : Export a playlist in « .m3u », « .txt » or « .lst » format.

Scan : Add a folder to your mediabase.

1 mediabase1.vib : Last mediabase you loaded.

2 mediabase2.vib : Previous mediabase you loaded.

Options : Option menu.

Properties : View the properties of your mediabase.

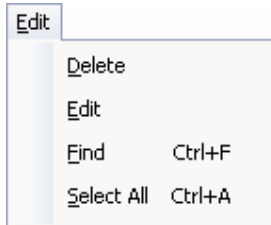
Config Report : Generate a system configuration report file

(.txt).

Quit : quit MIXVIBES®.

Reset : Stops the playback and empties your players.

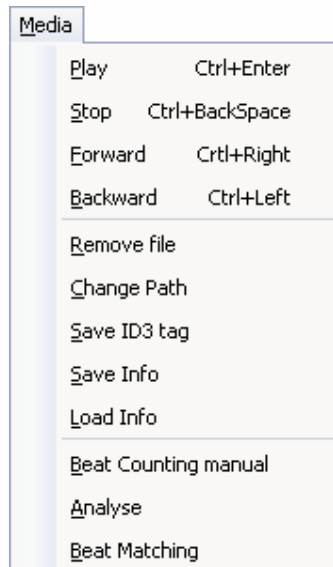
2. Edit Menu



- Delete** : deletes the selected tracks from your mediabase.
- Edit** : Edit the tag information of the selected media.
- Find** : Allows your to search for media in your mediabase.
- Select All** : Selects all the media in your media base.

3. Media Menu

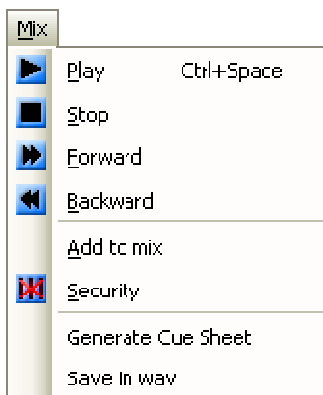
The following actions are operated on all the selected media in the mediabase.



- Play** : Loads and starts the media file for playback.
- Stop** : Stops the playback.
- Forward** : Fast forward the media playback.
- Backward** : Rewinds the media playback.
- Remove file** : Deletes the media file from the mediabase and Hard Drive.
- Change path** : Allows you to change the location of the selected media on the hard drive.
- Save ID3 tag** : allows you to save all the tag information of the selected « .mp3 » media file.
- Save Info** : Save the tag information in MIXVIBES® « .vof » format.
- Load Info** : Load a « .vof » tag information file.
- Beat Counting Manual** : Open the manual BPM tool.
- Analyze** : Analyzes the media (BPM and peak calculation)

Beat Matching : Allows you to modify the playback tempo upon the next load of your media file into a player.

4. Mix Menu

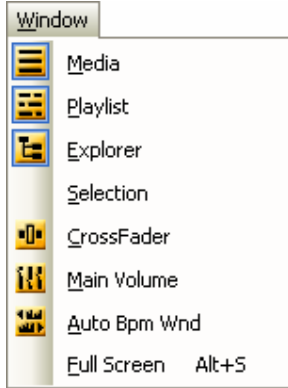


- Play** : Starts the playlist playback.
- Stop** : Stops the playlist playback.
- Forward** : Skip to next track in the playlist
- Backward** : Skip to the previous track in the playlist
- Add to mix** : Add selected media in the mediabase to the playlist
- Security** : Activate a security lock that prevents you from loading tracks on an active player

Generate Cue Sheet : Generates a Cue file based on the playlist.

Save in wav : exports the full playlist in a .wav file.

5. Window Menu



Media : View/Hide the mediabase.

Playlist : View/Hide the playlist.

Explorer : View/Hide the explorer.

Selection : View/Hide the advanced selection window.

CrossFader : View/Hide the crossfader rack.

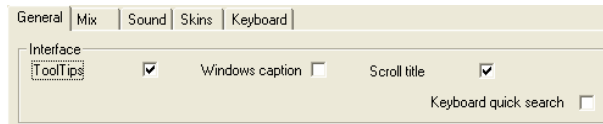
Main Volume : View/Hide the main volume control.

Auto Bpm Wnd : View/Hide the Auto BPM rack.

Full Screen : Switch to a full screen view

B. Options

1. General



ToolTips : Activate/Deactivate the contextual information pop-ups in MIXVIBES®.

Windows caption : enhanced Windows® interface display

Scroll title : Activate/Deactivate the title scroll in the players

Keyboard quick search : Activate the Keyboard Mediabase Quick search option.



Autoload last file / Init Dir : Automatically load the last active playlist upon start up of MIXVIBES®.

Tag : choose the tag format you which to save , choose **ID3V1** for version 1 tags, **ID3V2** for version 2 tags.

History : Stores the history of files played during a MIXVIBES® session. Click on **See File** to access the history.



Pitch bend : Pitch bend intensity.

Speed : Defines the highest/lowest value of Speed distortion.

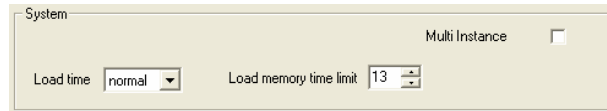
Ex : Speed = 10 ➔ maximum variation of $\pm 10\%$

Jog : defines the highest value of distortion accessible through the Jog wheel.

Pitch tones : Define the highest/lowest values of ton distortion (in semi-tons)

Ex : Pitch tones = 6 ➔ maximum variation of ± 6 semi-tons ($\frac{1}{2}$ an octave).

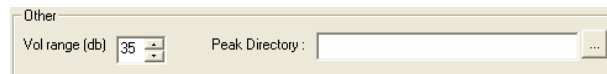
Reverse speed sliders : activates the inversion of the speed/tempo/ton cursor (DJ default standard).



Load Time : Lets you choose your load time speed.

Multi instance : authorizes you to open multiple MIXVIBES® sessions at the same time

memory time limit : define the maximum length (in minutes) of a media file MixVibes can load in the RAM memory.

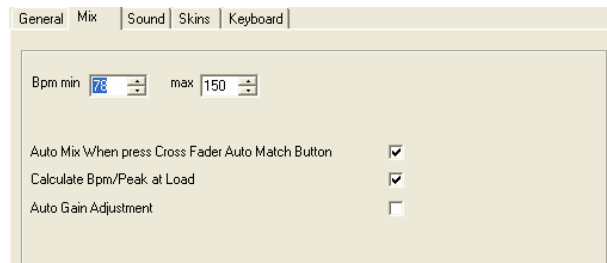


Vol range (db) : defines the dB range between the lowest and highest dB value.

Ex : Vol range (db) = 35 ➔ the volume will range from -35dB to 0dB.

Peak Directory : define a peak folder to stock the (« .vpk ») peak file. Default location is («C:/Program Files/MixVibesHOME/Peak »).

2. Mix



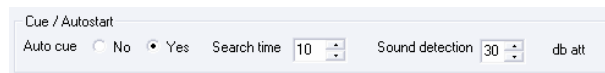
Bpm min/max : Defines the range of tempo MixVibes can analyze.

👍 A smaller range will ensure a faster and more accurate analysis of your mediabase. Each style has its own classic BPM range. You can find more information about this topic on internet.

Auto Mix When press Auto Match Button : Activates/Deactivates the Beat Matching when you use the Auto Mix feature (see p. **Erreur ! Signet non défini.**).

Calculate Bpm/Peak at Load : Activate/Deactivate the BPM/ Peak calculation upon track load depending on the resources of your computer. This option is compulsory for the Auto Mix option (see p. 21)

Auto Gain adjustment : : Activate/Deactivate the Auto Gain adjustment. This will avoid saturation.

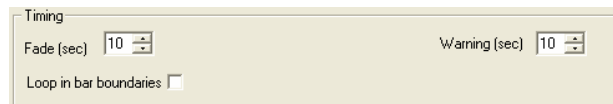


Auto cue No/Yes : Activate/Deactivate the Auto Cue.

Search time : time interval from the beginning of the track in which MIXVIBES® will set a Cue point.

Sound detection : Minimum sound level (Db) level for the Cue point.

👍 MIXVIBES® will set the cue at the first point within the time interval that attains the sound detection value.



Fade (sec): define the time (in seconds) of your Automix transitions.

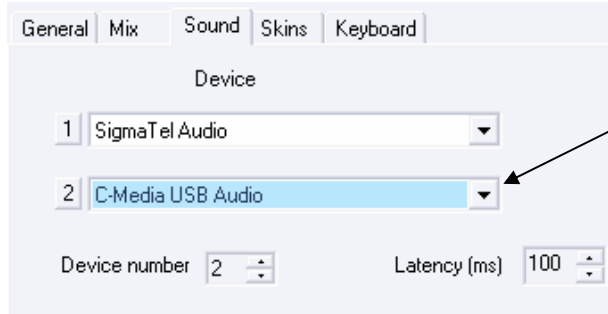
Warning (sec): maximum time until end of the track before the end of track alert starts.

👍 Ici MIXVIBES® In the example MixVibes will start the alarm 10 seconds before the end of the track.

Loop in bar boundaries : Activate/Deactivate this option to enable an automatic selection of entry and exit points of your loops. This allows you to make near to perfect loops easily.

3. Sound

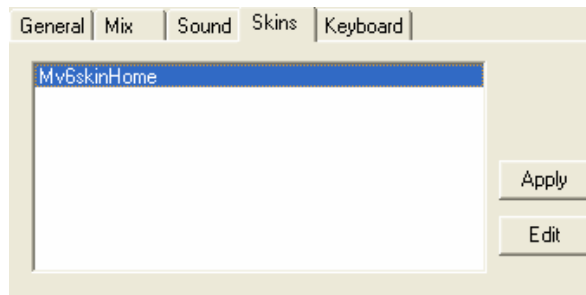
This menu allows you to define the audio peripherals you want to use in MIXVIBES® as well as the latency of each peripheral.



First install the MIXVIBES® USB audio interface (see p.7) and plug your headphones into the output and select it as your secondary audio device. All you need is to switch a player to output 02 to monitor it (see p.19).

👉 Depending on your audio devices quality a too low latency can interfere with the audio playback fluidity. If you experience skips in the audio playback set your latency to a higher value until the problem is solved.

4. Skins

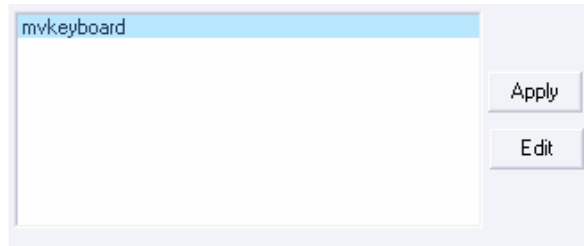


This menu allows to choose a skin for your MIXVIBES® devices. You can find more skins on the MIXVIBES® forum. (www.mixvibes.com/forum).

A few different skins ...



5. Keyboard

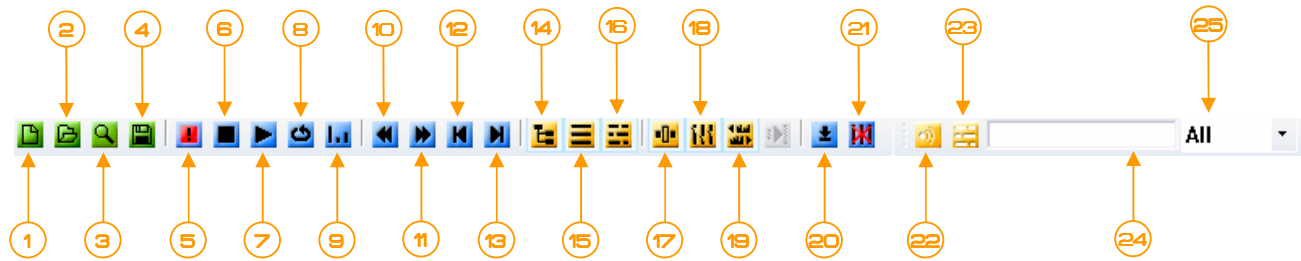


Allows you to check and redefine the keyboard shortcuts. MIXVIBES® allows you to reconfigure these shortcuts for a personalized more efficient use. You can edit the default configuration by clicking **Edit** in the Midi menu, or by using the Mapper tool « MVMapper.exe » that you can find in MIXVIBES® installation folder (default location: C:\Program Files\MixVibesHOME\MVMapper.exe)

👉 These keyboard configuration files are « .vkb » and must be stored in the same folder as « MixVibesHome.exe ».

Chapter 7 : tool bar

To View/Hide the tool bar, right click on the upper bar to the right of ? and select **Commands**.



Manage a Mediabase. (see p.24)

1. Create a new mediabase.
2. Open an existing mediabase.
3. Scan : Import media files from a defined location.
4. Save the mediabase.

Control the playlist playback. (see p.26)

5. Stop all playback.
6. Stop playlist playback.
7. Launch playlist playback.
8. Activate/Deactivate loop playback of a playlist.
9. Activate/Deactivate random playback of a playlist.
10. Rewind.
11. Fast Forward.
12. Play previous media file.
13. Play next media file.

Interface management. (see p.29)

14. View/Hide explorer.
15. View/Hide mediabase.
16. View/Hide playlist.
17. View/Hide crossfader.
18. View/Hide volume rack.
19. View/Hide Auto BPM rack.

Media search. (see p.**Erreur ! Signet non défini.**)

20. Open MIXVIBES® option menu
21. Activate the lock track mode.
22. Activate/Deactivate absolute search.
23. Activate/Deactivate search results in playlist.
24. Search Field.
25. Search criteria.

Chapitre 8 : Index

A

Auto-BPM.....	22
Audio Peripherals.....	20, 23, 40, 41
Audio Output	20

C

Crossfader	20, 21, 44
Cue/Stop.....	11, 12, 14, 15, 26, 40
Cursor (speed/master tempo/pitch)	12, 17, 18

E

Equalization	19, 20, 23
Exploer.....	13, 25, 26, 27, 34, 35, 38, 44
Edit menu	27, 36, 42
Equlizer & Mixer	19, 20, 23

F

Fade.....	21
File menu	13, 15, 26, 27, 28, 36
Fast Search	14
Frequency kill	20

G

Gain.....	19, 23
-----------	--------

I

iTunes®.....	27, 36
Interface	34, 44

J

Jog wheel	11, 14
-----------------	--------

K

Keyboard shortcuts	42
--------------------------	----

L

Location	11, 12, 14, 16, 17, 26
Loop	11, 12, 14, 16, 17, 26
Load Media	11, 13, 15

M

Mastering	23
Mediabase	25
Media menu	37, 38
Mix menu.....	13, 15, 22, 37, 40
Mute	19
Monitoring	8, 10, 20, 40, 41
Media properties	27

O

Options	13, 15, 20, 36, 38
----------------------	--------------------

P

Pan	20
Peaks	13, 22, 37, 40
Pitch/key	17, 22, 39
Playlists.....	27, 38
Player	11, 12, 13, 14
Play, Pause	11

R

Repeat	11, 14
Recording.....	23, 24

S

Saturation	23
Speed.....	17, 39
Sound interface	8, 10
Skins	16, 42
Search	14

T

Tempo - BPM .	12, 14, 16, 17, 18, 21, 22, 39, 40, 41
Tool Bar	26, 34, 44
Track search.....	11, 29

V

Volume.....	20, 23, 24
-------------	------------